

LAURA CURRAN
COUNTY EXECUTIVE



PATRICK J. RYDER
POLICE COMMISSIONER

STOLEN AUTO PREVENTION TIPS

From the Nassau County Police Department

***Every 43 seconds,
a car is stolen in
the United States,
which is close to
a million vehicles
per year!***



1. Do not leave your car unlocked
2. Never leave your car running, especially while it is unattended or unlocked
3. Do not leave a spare key near or in your vehicle
4. Never leave your windows open
5. Park in well-lit areas
6. Install an audible alarm system and a visible anti-theft device
7. Consider installing a GPS tracking system
8. Do not leave valuable personal property in your vehicle
9. Leave your car in park or in gear with the wheels turned towards the curb
10. ALWAYS look around and be aware of your surroundings

Be Alert! If you see something, say something!

Call 911 for emergencies or crimes in progress
Crime Stoppers 1-800-244-TIPS



POLICE ALERT

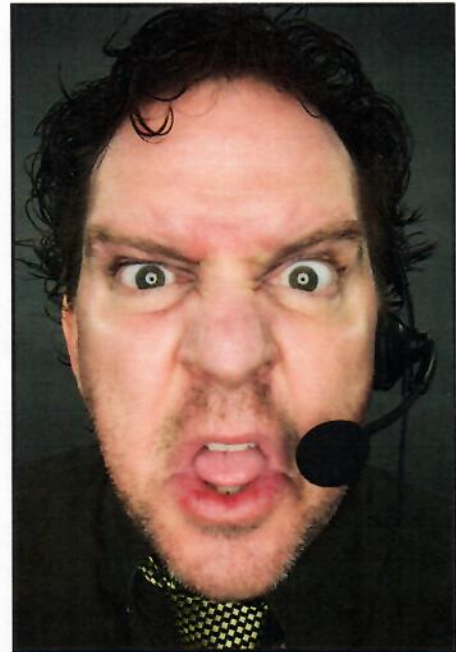


LAURA CURRAN
COUNTY EXECUTIVE

PATRICK J. RYDER
COMMISSIONER OF POLICE

PHONE SCAMS

Nassau County residents are being financially targeted by individuals who are making false statements on the phone. Callers attempt to manipulate recipients into sending them money by pretending to be legitimate entities.



THESE PHONE CALLS ARE ILLEGAL

Examples of
Phone Scams
include:

- X Kidnapped or arrested family members**
- X Government Agencies**
- X Utility Companies**
- X Prize Winners**

Legitimate agencies and companies will **NEVER** ask you to send money via:

- X Gift Cards / iTunes Cards**
- X Green Dot MoneyPak**
- X MoneyGram**
- X Western Union**

If you receive a similar call, hang up immediately and call 911

LAURA CURRAN
County Executive



PATRICK J. RYDER
Commissioner of Police

Safety Tips from the Nassau County Police Department



CONCEAL IT, OR THEY'LL STEAL IT!

Thefts from Vehicles

- Park in well-lit areas.
- LOCK YOUR VEHICLE and do not leave it running unattended.
- Do not leave any valuables visible in the vehicle. Hide packages and shopping bags in the trunk.
- Keep keys in your hand when walking to your car or home.

Shopping Tips

- Be alert and aware of your surroundings at ALL times.
- Don't carry more cash and credit cards than you absolutely need.
- Be sure your purse or wallet is secured at all times.
- Shorten the strap on your purse so you can carry it tightly between your elbow and body.
- Make sure all valuables are removed from the shopping cart when leaving the store.
- If someone pulls on your purse, let it go! It's more important to avoid injury rather than save your purse.

Be Alert! If you see something, say something!

Call 911 for emergencies or crimes in progress

Crime Stoppers 1-800-244-TIPS



PROTECT YOURSELF FROM PORCH PIRATES

PACKAGE THEFT PREVENTION TIPS

*from the
Nassau County
Police Department*



- Request a **specific delivery date and time** from the shipper when you know you will be home
- Have packages delivered to a place where they can be **received in person**, such as the home of a **trusted neighbor**, who stays home during the day
- Request that the shipper **hold your package** at its pick-up facility so you can pick it up in person at your convenience
- Provide **delivery instructions** to the shipper so that packages can be left at a safe location at your home that is **out of sight from the street**
- If your employer will allow it, **have packages delivered to your place of work**
- Consider a **visible surveillance camera** and a security company sign near the front door

Be Alert! If you see something, say something!

Call 911 for emergencies or crimes in progress

Crime Stoppers 1-800-244-TIPS

LAURA CURRAN
County Executive



PATRICK J. RYDER
Commissioner of Police

Safety Tips from the Nassau County Police Department



Thefts from Vehicles

- Park in well-lit areas.
- LOCK YOUR VEHICLE and do not leave it running unattended.
- Do not leave a GPS or any other valuables visible in the vehicle. Hide packages and shopping bags in the trunk.
- Keep keys in your hand when walking to your car or home.

Shopping Tips

- Be alert and aware of your surroundings at ALL times.
- Avoid carrying large amounts of cash.
- Be sure your purse or wallet is secured at all times.
- Shopping with kids? Teach them to go to a store clerk or security guard if you get separated.

Shopping Online

- Shop only on secure websites.
- Do not respond to emails asking you for personal or credit card information.
- Check your credit card and bank statements regularly.

Take Inventory

- Make time to update or create a home inventory.
- Take photos or make a video of valuable items with descriptions and serial numbers.

Burglary Prevention

- If you have an alarm, be sure to set it. Consider installing an alarm system, if you don't have one.
- Gifts and valuables should be kept out of sight, away from windows.
- Do not publicize that you will be out of town on the internet.
- Leave your lights on when you leave the house.
- Lock all doors and windows when you leave, even if it's just for a few minutes.
- Ask a neighbor to watch your home if you'll be away.

Be Alert! If you see something, say something!

Call 911 for emergencies or crimes in progress
Crime Stoppers 1-800-244-TIPS

LAURA CURRAN
County Executive



PATRICK J. RYDER
Commissioner of Police

Commercial Burglary Prevention Tips from the Nassau County Police Department



Doors & Locks

- Secure all doors, windows, roof openings, air ducts, skylights, air conditioning units, hatchways, sidewalk and basement openings.
- Reinforce doors with long screws or bolts on heavy-duty strike plates, pop out proof hinges, or hole/nail combo at top and bottom.
- Replace all hollow-core doors.
- Double cylinder, dead-bolt locks with one inch throw bolts are preferred for doors.
- Install cylinder guards and strike plates to slow down forced entry and prevent "jimmying."

Alarm Systems

- Install an alarm system and test system regularly.
- Have clearly visible alarm signage.

Windows

- Close and lock all windows at end of business day.
- Install burglary-resistant glass, wire mesh or iron bars on windows.
- Clear windows of signage and overgrown shrubbery. If you can't see inside your business, neither can police officers.

Lighting

- Illuminate all entry points and exterior sides of your business. Include alley and parking lots.
- Use low-watt lights inside and bright lights outside.

Video Surveillance

- Install security cameras facing the cash registers and points of entry/exit.

Cash Registers & Safes

- Keep a minimum of cash on the premises.
- Leave cash registers empty and open after hours.

**T
I
P
S**

Lock your business at night.

Proper lighting deters crime.

Use your alarm system.

Work with neighboring business.

If a burglary does occur, call 9-1-1 immediately.

Do not try to enter the premises – the burglar may still be inside. Do not disturb any evidence. Consult with your local precinct to discuss how to best protect your business from another burglary.

Be Alert! If you see something, say something!

Call 911 for emergencies or crimes in progress

Crime Stoppers 1-800-244-TIPS



POLICE ALERT



LAURA CURRAN
COUNTY EXECUTIVE

PATRICK J. RYDER
COMMISSIONER OF POLICE

BEWARE OF DECEPTION BURGLARIES AND HOME IMPROVEMENT SCAMS

Nassau County Police offer the following tips to prevent deception burglaries:

- ✓ Do not allow uninvited repair workers into your home, especially if they want to fix something that you have not noticed is a problem (such as a leaky roof).
- ✓ If someone claims to be at your home for an inspection, ask for identification and contact their company prior to allowing them into your home.
- ✓ Keep doors locked when possible to prevent anyone from entering your home while you are outside the house.
- ✓ Call 911 immediately if someone attempts to enter your home or you suspect someone is attempting a deception burglary.
- ✓ Watch for people offering services in your community and make sure to write down a description of the individuals and their vehicle, including a Plate number.
- ✓ Older residents and those living alone are often targeted – keep in contact with your neighbors to ensure that they are not victimized.
- ✓ Always research companies before hiring them to ensure that they are legitimate companies with a good reputation.



As with other crimes, you can make your neighborhood an uncomfortable place for criminals to be: **Report Any Suspicious Activity.**

To report any suspicious activity 1-800-244-TIPS (8477)



RESIDENTIAL BURGLARY PREVENTION TIPS

From the Nassau County Police Department



**S
A
F
E**

DO:

- ✓ Lock doors, windows, and gates when leaving the house.
- ✓ Make alarm stickers visible on doors and windows; they should be easily seen from the street and sidewalk.
- ✓ Take pictures of your valuables and mark them with your driver's license number to make them easy to trace.
- ✓ Set inside lights on timers to turn on at dusk.
- ✓ Install outside motion detection lights at the corners of your home. Make sure they are high enough so that an intruder is unable to unscrew the bulbs.
- ✓ Use dead bolts with a one-inch throw to make the mechanism difficult to pry open.
- ✓ Ensure that sliding glass doors and windows have metal pins or a metal bar installed so that they cannot be pried open.



**U
N
S
A
F
E**

DON'T:

- ✗ DO NOT leave newspapers and packages in the doorway. Arrange for a delivery time when you or a neighbor can pick them up.
- ✗ DO NOT leave garbage cans at the curb all day; if you cannot stay home, use plastic bags instead of garbage cans.
- ✗ DO NOT let people know you are not home by posting on the Internet or on voicemail.
- ✗ DO NOT let shrubbery overgrow and hide windows and doors.
- ✗ DO NOT leave valuables out. Store them in a non-discrete location, avoiding bedroom drawers and obvious places.
- ✗ DO NOT leave driveway empty. If possible, have a neighbor park a car in your driveway.

IF A BURGLARY DOES OCCUR, CALL 9-1-1 IMMEDIATELY.

DO NOT try to enter the premises – the burglar may still be inside. DO NOT disturb any evidence.

Be Alert! If you see something, say something!

Call 911 for emergencies or crimes in progress

Crime Stoppers 1-800-244-TIPS