

What is stormwater?

- Precipitation that flows off the land through storm sewer drains and into waterbodies

How does stormwater impact waterbodies?

- Stormwater can pick up pollutants as it flows over land
- Stormwater that enters the storm sewer system is not treated before it enters a waterbody
- Stormwater pollutants can be toxic to aquatic life and people

What is an illicit discharge?

- Discharges into the storm sewer system that are not entirely composed of clean stormwater
- Examples include motor oil, paint, washwater, trash and animal wastes

Permitted non-stormwater discharges:

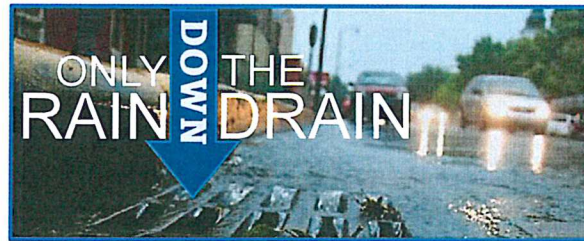
- Some non-stormwater discharges are not prohibited
- These include fire fighting activities and landscape irrigation, for example

What do illicit discharges look like?

- Staining along curbs or on drainage grates
- Foul odors
- Cloudy or colored fluids entering the storm sewer
- Water flowing through the storm sewer system during dry weather

Pollutants of Concern:

- Nutrients like Nitrogen and Phosphorous
- Bacteria and Viruses

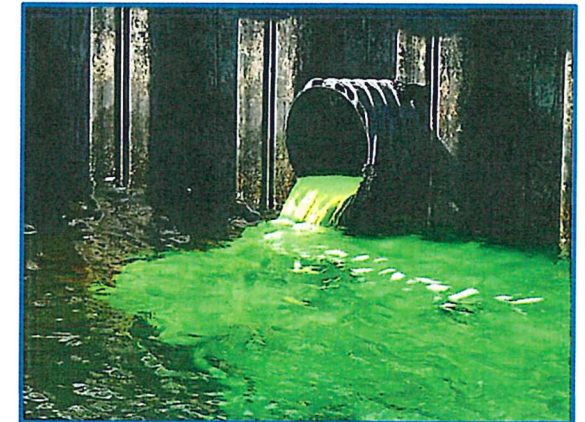


If you observe an illicit discharge to the Village storm sewer system, please contact:

Department of Public Works
(516) 621-5600

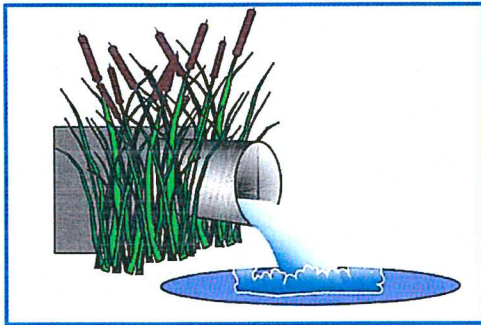
PREVENTING ILLICIT DISCHARGES

KEEPING POLLUTANTS OUT OF THE STORM SEWER SYSTEM



Illicit Discharges are Illegal

- The Village has enacted two local laws to make it illegal to contribute pollutants to the storm sewer system
- The laws address pollutants entering waterbodies such as:
 - Glen Cove Creek
 - Hempstead Harbor



Did you Know?

Whether in your car, at the waterfront, or inland, your daily activities can pollute our waters and harm fish and wildlife

ILLICIT DISCHARGE PREVENTION

Using proper handling and disposal practices can protect water quality!

Households

- Properly dispose of trash, chemicals and paints
- Limit the use of fertilizers and pesticides
- Do not sweep or blow yard waste into storm drains
- Do not over water lawns
- Have cesspools inspected and pumped regularly
- Do not drain chlorinated swimming pool water into the street

Animals

- Do not throw poop bags into storm drains
- Pick up pet waste and flush it down the toilet
- Bag pet waste and put it in the trash
- Do not feed wildlife



Automotives

- Repair leaks as soon as possible
- Recycle motor oil, oil filters and other fluids properly at vehicle service centers or auto parts stores
- Wash your car at a commercial car wash

Businesses and Restaurants

- Inspect equipment for leaks
- Proper dumpster maintenance
- Implement spill prevention and response procedures
- Ensure floor drains are connected to the sanitary sewer system
- Maintain grease traps